

1. Scope

This specification sheet applies for the model AC0102-A1043-P2-1411.

2. Outside dimensions

As per attached external drawing No. GK95033

3. Performance

Item	Standard value	Conditions
1. Rated Voltage	230 V AC	
2. Rated Frequency	50/60 Hz	
3. Rated Pressure	20 kPa {0.2 kgf/cm ² }	
4. Rated Airflow (Note 2)	5 L/min	Minimum value, Note 1, Rated Pressure, Cooled-down and Start-up Unit
5. Power Consumption (reference)	15/14 W	Note 1, Rated Pressure, Cooled-down and Start-up Unit
6. Maximum Current	0.19/0.17 Amp. +10%	Note 5, Cooled-down and Start-up Unit
7. Maximum Pressure (reference)	40 kPa {0.4 kgf/cm ² }	Note 1, Cooled-down and Start-up Unit
8. Coil Insulation Class	Class B	UL
9. Duty Cycle	Continuous	Note 1, Rated Pressure
10. Rated Performance(hour) (Note 3)	10,000 hours	Note 1, Rated Pressure, MTTF
11. Sound Level	40 dB	Note 1,4, Rated Pressure, Cooled-down and Start-up Unit
12. Starting Voltage	207 V AC	Standard Condition
13. Weight	0.7 kg	
14. Ambient Temperature	0 ~ 40 °C	No condensation present in the unit
15. Ambient Humidity	30 ~ 85%	No condensation present in the unit
16. Length of Lead Wire	200 ± 15 mm	AWG 22,UL 1015
17. Safety Standard	UL2601 CE marking	

※Standard Condition means the air condition of temperature 20 °C ,absolute pressure 101.3kPa and relative humidity 65%.(A.N.R.)

Note 1: Measured at Rated Voltage and Frequency in Standard Condition.

Note 2: The air displacement per minute converted into figures in Standard Condition.

Note 3: Rated Performance (hour) means the total accumulated time over which the unit can be used without repair (other than filter maintenance). This indicates the expected time required for the airflow to fall to 80% of the specification value when operated at the rated voltage, frequency and rated pressure.
Rated Performance (hour) will vary according to usage conditions (such as working pressure and environment).

Note 4: This is measured under the condition of;

The Compressor is operated at 1m from the floor and 1m from the microphone in an anechoic room.

The output air from the Compressor is discharged out of the anechoic room.

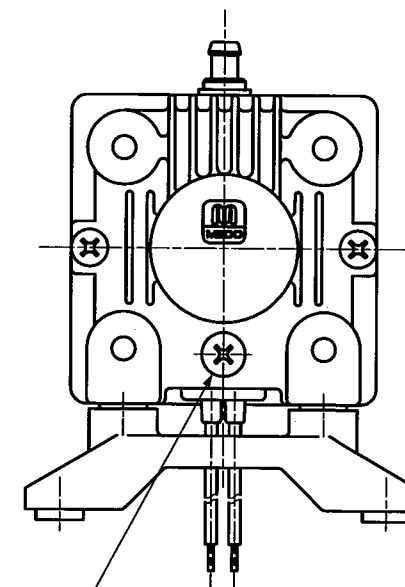
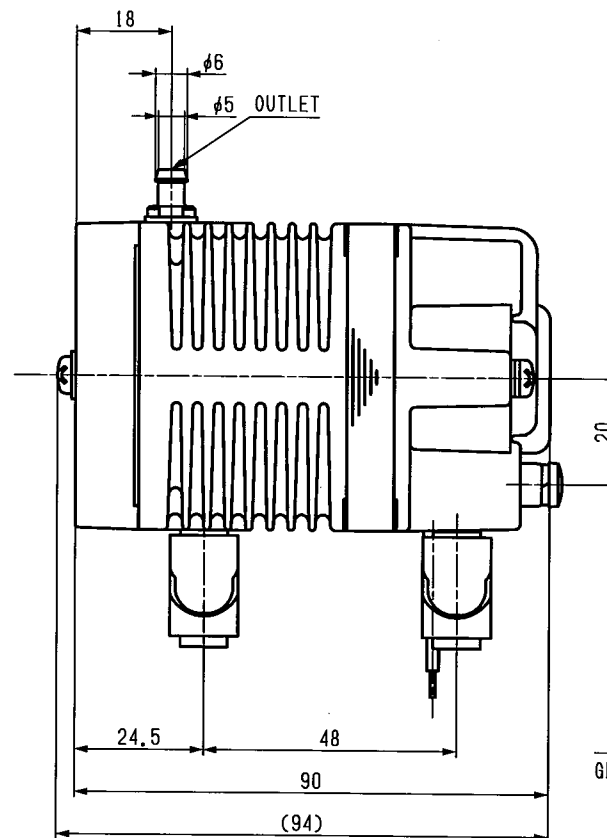
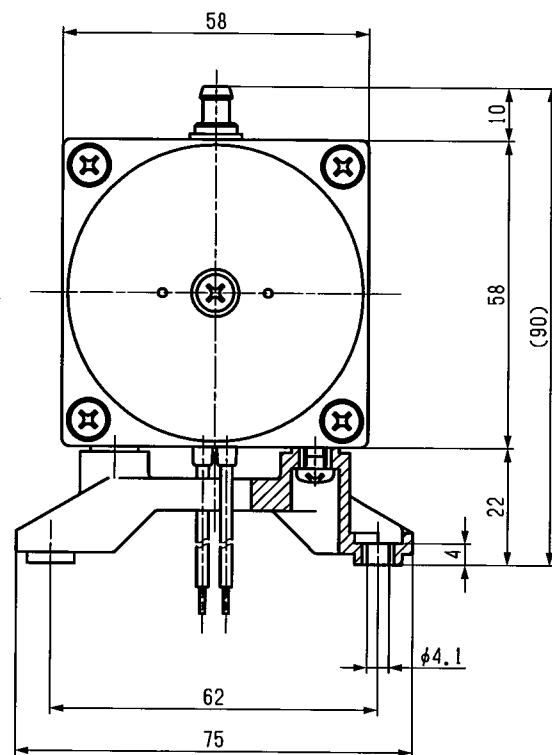
Note 5: Measured at 240V AC and Rated Frequency in Standard Condition.

Drawing with external dimensions

Compressor

MODEL AC0102-A1043

AC0105-A1048



アース用ねじ (M4)
GROUND CONNECTION (M4)

注 記; 1. 図中の寸法は参考値です。
2. 一律の縮尺で作図していません。
3. 単位: mm

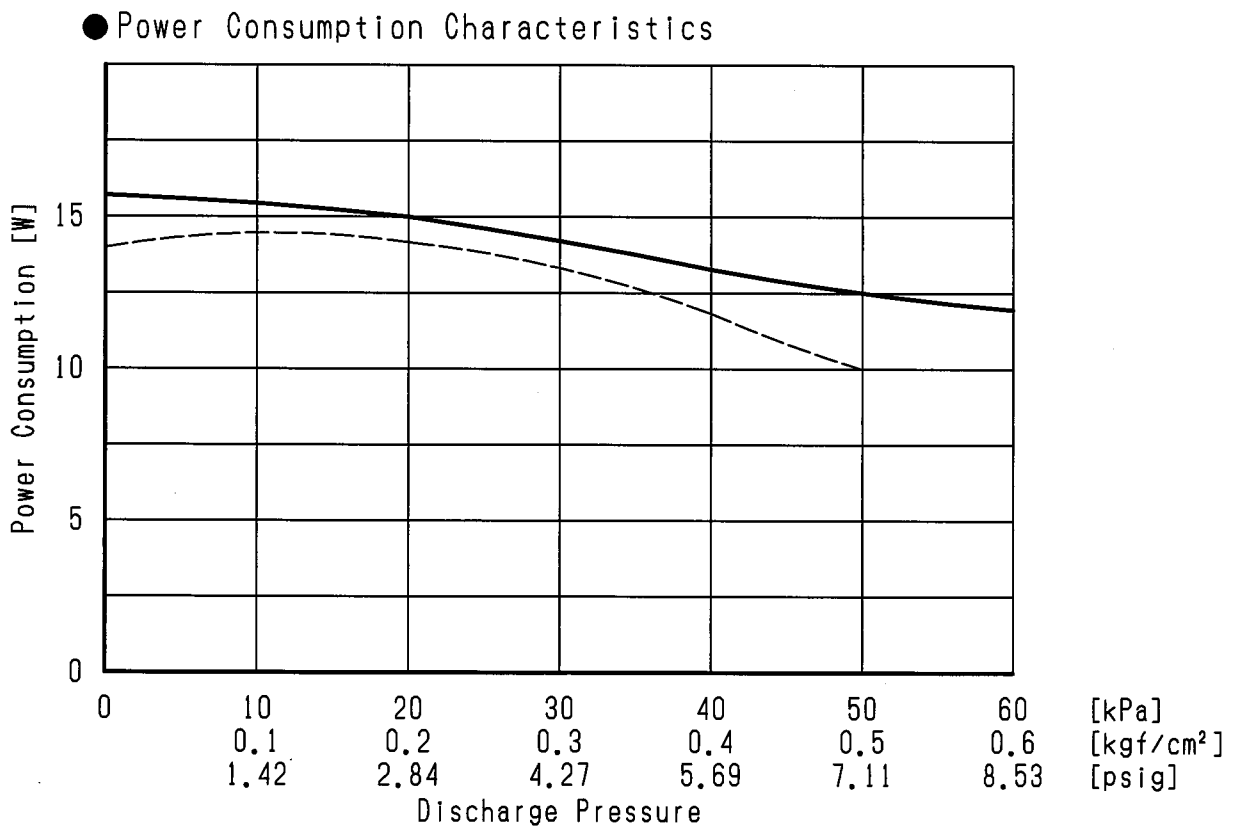
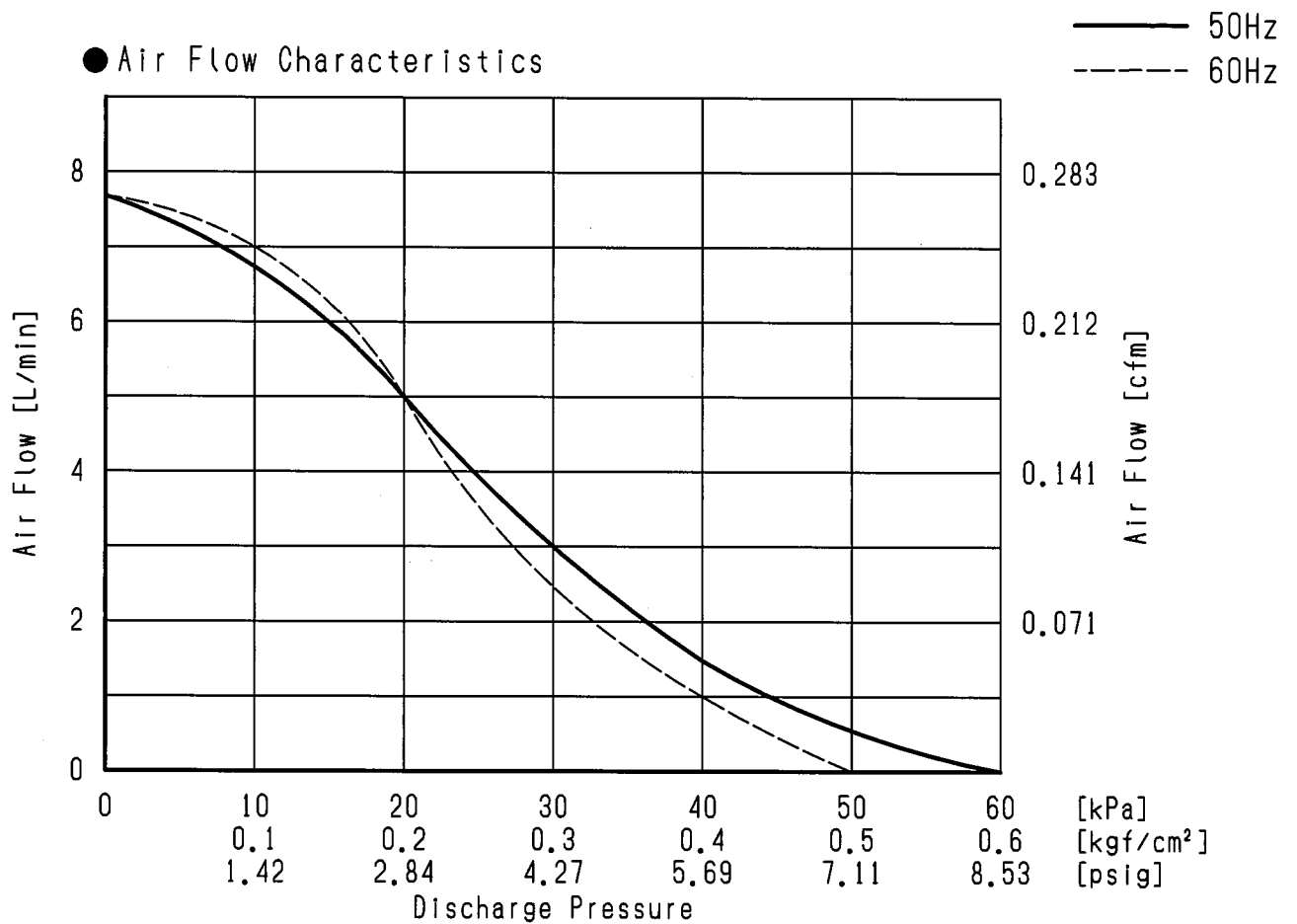
NOTE; 1. All dimensions in this drawing are for reference only.
2. This is not drawn to scale.
3. All dimensions are in millimeter.

NITTO KOHKI CO., LTD.

No. GK95033-5

AC0102-A1043

Performance Curves(Referential data)



*These performance curves are for referential data only.
*They are not guaranteed performances.

No.
LT93010-2